

LED Headlight For Harley Softail Breakout

VST-010101-005



BEFORE YOU BEGIN

Read these instructions and check to be sure all parts and tools are accounted for. Please retain these installation instructions for future reference.

IMPORTANT

This LED HEADLIGHT KIT is exclusively designed for your vehicle. Please read the installation instructions thoroughly before beginning. Installation is easier if the vehicle is clean and free of debris.

INSTALLATION INSTRUCTIONS

1. Shift vehicle transmission into "PARK". Turn key to "OFF" position and remove from vehicle.
2. Products and accessories.



3. First install the small bracket in the accessory kit on top of the large bracket, fix it with 4 screws, and then set it up for use.

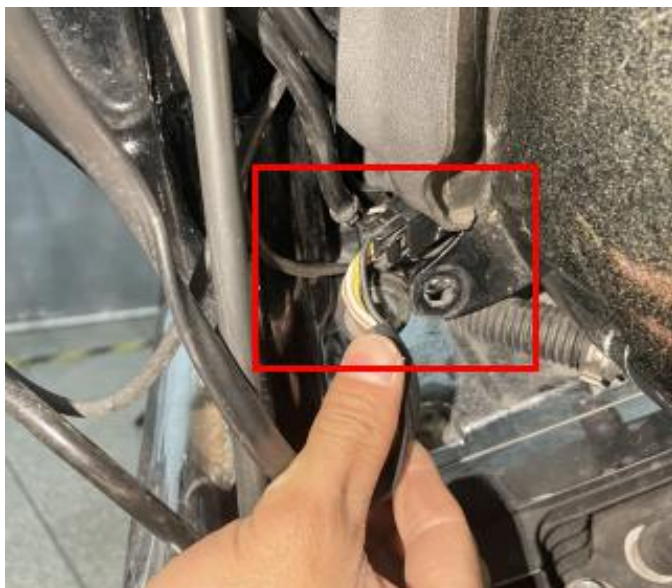


4. First remove the vehicle cushion and the screws below the fuel tank (screws do not have to be completely unscrewed, loosening can be), the screws below the fuel tank is the original light harness plug-in place, disconnect the plug-in.



LED Headlight For Harley Softail Breakout

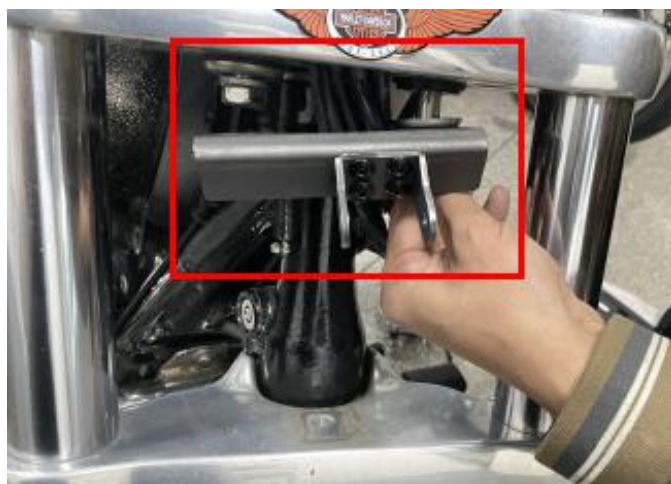
VST-010101-005



5. Unscrew the screws that fix the headlights and remove the original lights.



6. Unscrew the screw under the handle of the car head (when unloading the screw, you must unload it on one side, and then unload the other side of the screw after installation), the unloaded screw is connected to the pre-assembled headlight bracket in series, and then screwed back to the original place.

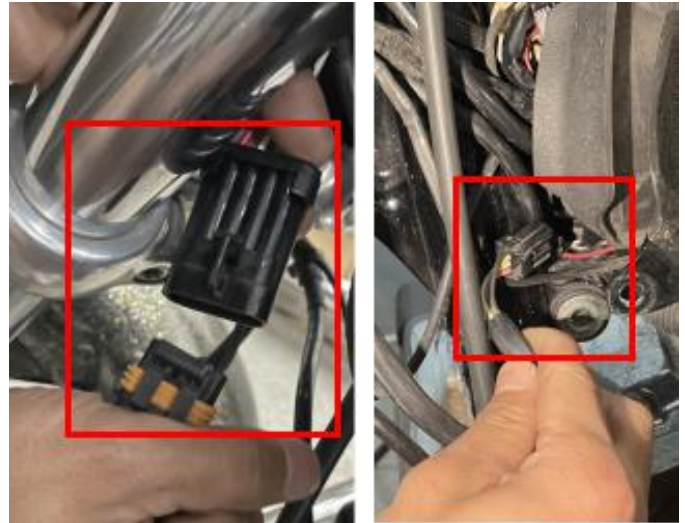


LED Headlight For Harley Softail Breakout

VST-010101-005



7. After the headlight bracket is installed, fix the new headlight on the bracket with screws (the angle of the headlight can be adjusted according to your own wishes). After determining the angle, tighten the screws, and then connect the headlight with an adapter cable. Connect the other end of the wiring harness to the plug-in on the vehicle, and then tighten the screws on the outside of the plug-in to install the vehicle mat.



8. The installation is complete.

