

Front Directional Light Relocation Kit for Harley Sportster

VST-010103-026



BEFORE YOU BEGIN

Read these instructions and check to be sure all parts and tools are accounted for. Please retain these installation instructions for future reference.

IMPORTANT

This front directional light relocation kit is exclusively designed for your vehicle. Please read the installation instructions thoroughly before beginning. Installation is easier if the vehicle is clean and free of debris.

INSTALLATION INSTRUCTIONS

NOTE

Shift vehicle transmission into "PARK". Turn key to "OFF" position and remove from vehicle. This kit contains the components needed to relocate directional lights mounted on the upper fork bracket or handlebars (mirrors) to the bottom fork bracket. On motorcycles equipped with front directional lights with three wires, the third black wire is a ground wire. Check how many wires are connected to the front directional lights and follow the following procedure that applies.

RELOCATING TWO WIRE DIRECTIONAL LIGHTS

1. Support motorcycle on a center stand such that front wheel is raised slightly off the ground.
2. Remove fork tube pinch screw from right side of lower fork bracket.
3. If directional light is mounted on upper fork bracket, remove fork tube pinch screw from right side of upper fork bracket. (This is the screw that secures the right directional light.) See Figure 1. If directional light is mounted on mirror, remove directional light and mounting hardware. Retain the internal toothed lockwashers (4) and spacer (5).

NOTE

Before cutting wires at directional light, remove the directional light and check if wires are long enough to reach bottom fork bracket. If wires are too short perform Step 5 otherwise go to Step 6.

4. Install nut from kit to retain right mirror. If nut

"bottoms" without tightening add the second inner tube from kit in the location shown.

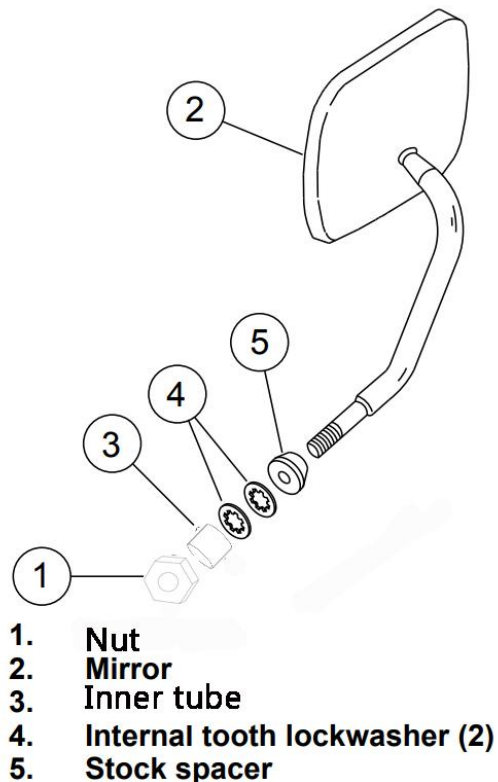


Figure 1. Attaching Mirror

NOTE

If directional light is mounted on upper fork bracket, perform Step 6. If directional light is mounted on mirror, refer to Figure 2 and install the directional light mount and then perform Step 6, but, use 3/8-16 x 2.0 inch screw from kit to attach directional light. Disregard reference to upper bracket pinch screw.

5. Cut wires connected to right directional light about 2 inches away from directional light body.
6. Install right directional light on right side of lower fork bracket using pinch screw removed in Step 3. Install pinch screw removed in Step 2

Front Directional Light Relocation Kit for Harley Sportster

VST-010103-026



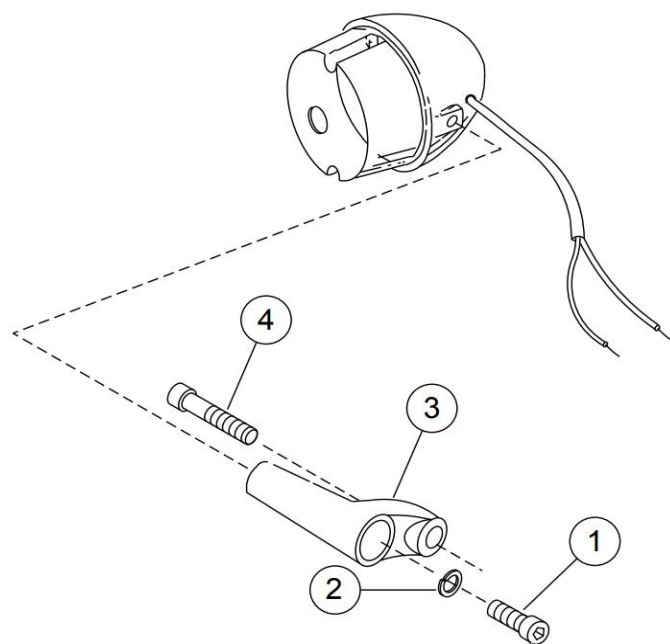
into right side of upper bracket. Tighten both pinch screws to 30-35 ft-lbs (41-47Nm).

NOTE

Fork tubes may slide downward within fork brackets. If this occurs, front fork tube extension above front fork upper bracket will have to be readjusted according to appropriate Service Manual procedures.

7. Repeat Steps 1 through 6 to relocate left directional light. See Figure 1. Use stock acorn nut and internal toothed lockwasher to mount mirror.

8. If wires were cut, connect the right directional light as follows: Strip approximately 5/16 in. insulation from the wires cut in step 5.



1. Screw, 5/16-18 x 9/16 inch (2)
2. Lockwasher (2)
3. Directional light mount (2)
4. Screw, 3/8-16 x 2 inch (2)

Figure 2. Attaching Directional Light Mount

9. Crimp solderless connectors from kit on two wires coming from motorcycle.

10. Split one end of the 2-conductor polarized wire from kit back about 2 inches and strip 5/16 inch of insulation from wire ends.

NOTE

Polarized wire is used in this application to ensure correct wiring. One wire is silver, one is

copper colored. Wire colors of spliced wire must match wire color of original directional wire leads.

11. Slide a piece of shrink tubing from kit over each of the wire ends stripped in Step 10 and crimp the wires into the terminals installed in Step 9. Make sure you connect the silver and copper colored wires to like colored wires.

12. Cut polarized wires to the length required for connection to the wires at the relocated directional light. Make certain you leave enough slack in wires to allow routing the harness along the fork tube.

13. Split remaining end of the 2-conductor polarized wire from kit back about 2 inches and strip 5/16 inch of insulation from wire ends.

14. Slide heat shrink tubes over the two wire end.

15. Strip 5/16 inch of insulation from wires connected to directional light and connect like colored wires at directional light with connectors from kit.

16. Pay attention to insulation.

17. Position harness along fork tube and secure.

18. Repeat Steps 8 through 17 for left directional light.

19. Test operation of directional lights and running lights. If operation is not correct, verify that the wire splices were made properly.

RELOCATING THREE WIRE DIRECTIONAL LIGHTS

1. Support motorcycle on a center stand such that front wheel is raised slightly off the ground.

2. Remove fork tube pinch screw from right side of lower bracket.

NOTE

Before cutting wires at directional light, remove the directional light and check if wires are long enough to reach bottom fork bracket. If wires are too short perform Steps 3 and 4.

3. Carefully cut off 4 inches of conduit covering the wires connected to right directional light.

4. Cut the directional light wires at the following

Front Directional Light Relocation Kit for Harley Sportster

VST-010103-026



lengths from the directional light: Blue wire- 1-1/4 inches from directional light Violet wire- 2-1/4 inches from directional light Black wire- 3-1/4 inches from directional light.

5. Strip 5/16 inch of insulation from the cut ends of the three wires cut in Step 4.

6. Remove fork tube pinch screw from right side of upper fork bracket. (This is the screw that secures the right directional light.)

NOTE

If directional light is mounted on upper fork bracket, perform Step 7. If directional light is mounted on mirror, refer to Figure 2 and install the directional light mount and then perform Step 7, but, use 3/8-16 x 2 inch screw from kit to attach directional light. Disregard reference to upper bracket pinch screw. See Figure 1. Install acorn nut from kit to retain right mirror. If acorn nut "bottoms" without tightening add the second spacer from kit in the location shown.

7. Install right directional light on right side of lower fork bracket using pinch screw removed in Step 6. Install pinch screw removed in Step 2 into right side of upper bracket. Tighten both pinch screws to 30-35 ft-lbs (41-47Nm).

8. Repeat Steps 1 through 7 to relocate left directional light.

NOTE

Fork tubes may slide downward within fork brackets. If this occurs, front fork tube extension above front fork upper bracket will have to be readjusted according to appropriate Service Manual procedures.

9. If wires were cut, connect right directional as follows: Crimp solderless connectors from kit on three wires coming from motorcycle.

10. Cut a 6 inch length of wire from the black, blue and violet wires in the kit.

11. Strip 5/16 inches of insulation from one end on each of the 6 inch wire lengths, connect like colored wires and crimp into connectors installed in Step 9.

12. Slide shrink tubing from kit over crimped terminals. Activate shrink tubing with heat gun

or hair dryer.

13. Cut 8 inches of 5/16 inch ID conduit from conduit supplied with kit.

14. Slide 8 inch length of conduit onto three wires connected in Step 11 and over existing conduit.

15. Cut three spliced-on wires to the lengths required for connection to the wires connected to the directional light. Make certain to leave enough slack to allow routing harness along fork tube.

16. Slide heat shrink tubes over the three wire ends.

17. Strip 5/16 inches of insulation from remaining wire ends and connect like colored wires at directional light with connectors from kit.

18. Pay attention to insulation.

19. Slide 5/16 inch conduit, installed in Step 14, over all new connections and as close to directional light as possible.

20. Position harness along fork tube and secure.

21. Repeat Steps 9 through 20 to connect left directional light.

22. Test operation of directional lights and running lights. If operation is not correct, verify that the wire splices were made properly.